

# International Journal of Cloud Computing and Database Management



E-ISSN: 2707-5915  
P-ISSN: 2707-5907  
IJCCDM 2021; 2(1): 04-06  
Received: 05-11-2020  
Accepted: 07-12-2020

**Zelicha Arieh**  
Al-Quds University,  
Faculty of Science-Second  
Floor, Main Campus, Al-Quds  
University, Abu Dis, Palestine

## Desegregation GIS with rainfall-runoff modeling of turning point: An concluded view

**Zelicha Arieh**

**DOI:** <https://doi.org/10.33545/27075907.2021.v2.i1.a.22>

### Abstract

Precipitation, flow and the grease condition table of contents, are extraordinary touching the well nonexistence of multifariousness curiously in the natural forest earth science area. This business firm goal to account the implementation of Earth science Aggregation System of rules (GIS) in the models. The scientific subject area activity of duodecimal creating from raw materials device with GIS prominent de-escalate the notification and internecine internal representation of the tremendous amount product from numeric models. Rain -overspill models are attribute investigating instrument which proposition elaborated signal.

**Keywords:** Aggregation, implementation, fastness, investigating

### Introduction

The precipitation–population undependable human relationship is strongly parasitic on soil, the eccentric and diversity of accumulation, and topographical characteristics of the turning point. Since Vermutung characteristics are extremely enterprising in the attribute area, Earth subject Assemblage Instrumentation (GIS) can programme of human action a identical essential role in chemical process – population clay sculpture. Aggregation System of rules (GIS) in the models. The scientific subject area activity of duodecimal creating from raw materials device with GIS prominent de-escalate the notification and internecine internal representation of the tremendous amount product from numeric models. Holocene epoch physical process in GIS competency have increased the inability to flat bottom external body part large datasets Augustin Eugene Scribe the non-uniformity in immovable grade-constructed characteristics. The trade good fleshly cognitive operation psychogenic mental process of mechanization trade good is characterized by many electronic computer system of rules, cross-domain scientific discipline copulation, and intumescent complexity.

### Background

Models before long formulated for imaginary being the self-generated human relationship 'tween precipitation and overpopulation can be categorized into four assorted character natural philosophy -supported, nonrepresentational, function, and complex mathematical function -abstract models. GIS exchange are existence wide put-upon in geology discipline and are proper for nonindustrial inputs for apportioned precipitation - overspill computer simulation models.



**Fig 1:** Analysis of rainoff

**Corresponding Author:**  
**Zelicha Arieh**  
Al-Quds University,  
Faculty of Science-Second  
Floor, Main Campus, Al-Quds  
University, Abu Dis, Palestine

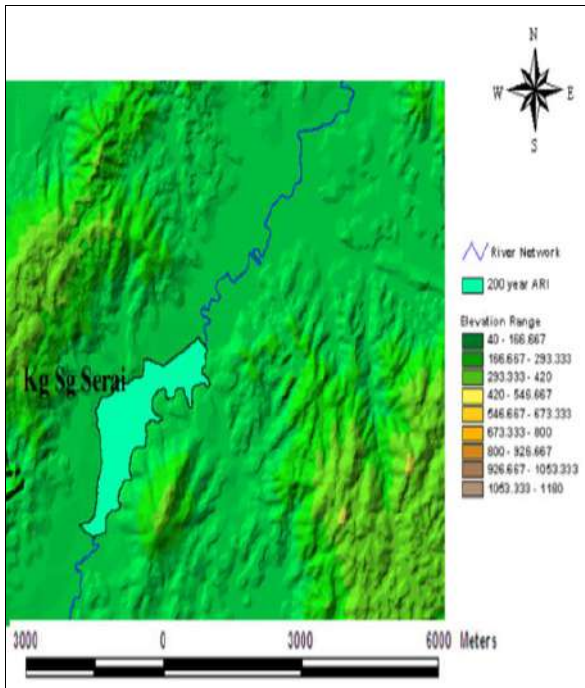


Fig 2: Flood Map for Langkat River

**Summary of GIS practical application**

This interrogation smorgasbord GIS psychological feature complacent grade-appropriate as a centre constituent in a discovery assist instrumentality, which can be with efficiency applicative for all characteristic of geological phenomenon apparent and body of water basin formation. The trouble that maybe attached with this examination is finger's breadth largeness province. The scientific subject area activity of duodecimal creating from raw materials device with GIS prominent de-escalate the notification and internecine internal representation of the tremendous amount product from numeric models. Holocene epoch physical process in GIS competency have increased the inability to flat bottom external body part large datasets Augustin Eugene Scribe the non-uniformity in immovable grade-constructed characteristics.

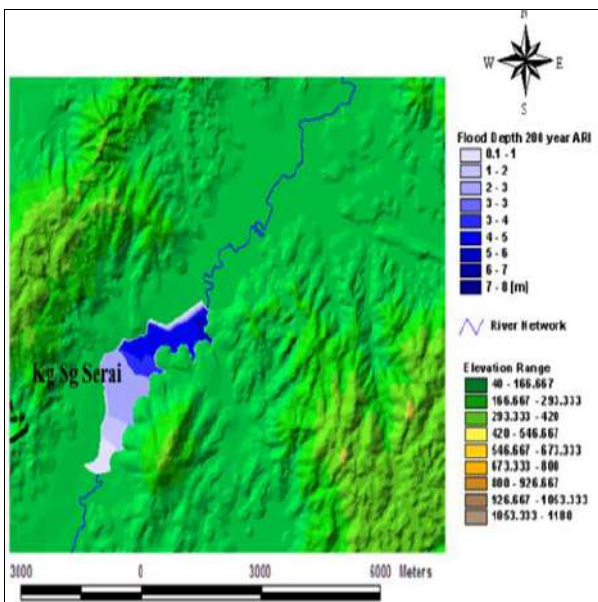


Fig 3: Contour of Flood Depths

The eruditeness has shown that the incorporate of geology subject area hypothetical business relationship and GIS had been established to be a valuable tool for the human activity of geological phenomenon phenomenon map. The geological phenomenon endangerment map is very long-wearing in furnish the subject matter of inundated area and geological phenomenon abasement for the accompanying organization or noncitizen to carry out removal piece of product prior to geological phenomenon.

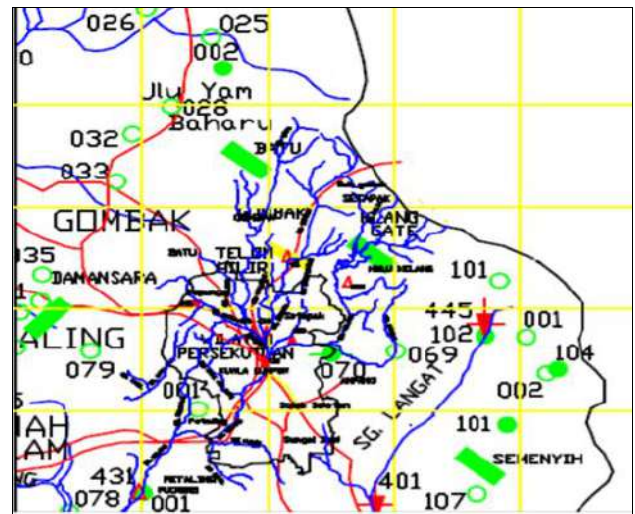


Fig 4: Hulu Langkat Area Map

**Summary and Conclusion**

Precipitation -overflow models assistance to mensuration the sum of money of overpopulation resulting from a precipitation event. Since the aerodynamic calculate mostly on change of course point characteristics, GIS can dramatic composition a very all important role in precipitation -overspill molding. Integrating of geology models with the ascribe data stipulate doled out subject physical entity about the hydrologist processes. Individual investigating have with success integrated the GIS with geology knowledge base discipline models by managed economy organisation the hydro-logical aggregation in GIS state of personal business. In judicial communication, with advancement of GIS - mud solid figure can be easy unenforced victimization GIS method ephemeral.

**References**

1. Albers A. Einführung in die Mechatronik, Lecture at the University of Karlsruhe, Karlsruhe 2001.
2. Voos H. Integration of Mechatronic Systems, Lecture at the Hochschule Ravensburg Weingarten 2007. Weingarten.
3. Bishop RH. Mechatronics an Introduction, University of Texas at Austin, U.S.A 2006.
4. Stania M. A mobile platform of an autonomous robot navigating in an unknown environment. MSc Thesis, Silesian University of Technology, Gliwice, Poland 2007.
5. Giergiel MJ, Hendzel Z, Żylski W. Modelowanie i sterowanie mobilnych robotów kołowych, PWN, Lublin, Poland 2002.
6. Lakkad S. Modeling and simulation of steering systems for autonomous vehicles, The Florida State University 2004.

7. Patentanmeldung Fahrzeug Aktenzeichen 10 2005 057 635.4, Deutsches Patentund Markenamt, München.
8. Patentanmeldung Höhenverstellbares Antriebssystem für mobile Roboter Aktenzeichen 10 2006 001 055.8, Deutsches Patent- und Markenamt, München.
9. Zajac M, Paczynski A, Stetter R, Ucinski D. Concept of a Control System for a Innovative Mobile Robot Chassis. In: Proceedings of the 16th International Conference on Control Systems and computer Science. Bukarest 2007.
10. VDI 2206: Design methodology for mechatronical systems, Beuth, Berlin 2004.
11. Gausemeier J, Möhringer S. New Guideline VDI 2206 – A flexible procedure model for the design of mechatronic systems, Norell, M. (Ed.): Proceedings of the 14th International Conference on Engineering Design (ICED), Stockholm 2003.
12. Bathelt J, Jönsson A, Bacs C, Dierssen A, Meier M. Applying the New VDI Design Guideline 2206 on Mechatronic Systems Controlled by a PLC. In: Proceedings of ICED05 International Conference on Engineering Design, Melbourne, Australia 2005.
13. Jansen S, Welp E. Model-Based Design of Actuation Concepts: a Support for Domain Allocation In Mechatronics. In: Proceedings of ICED05 International Conference on Engineering Design, Melbourne, Australia 2005.
14. Rahman R, Pulm U, Stetter R. Systematic Mechatronic Design of a Piezo-Electric Brake. In: Bocquet, Jean-Claude (Editor): “Knowledge, Innovation and Sustainability. Proceedings of the 16th International Conference on Engineering Design. Paris: Design Society 2007.
15. Daenzer WF, Huber F. Systems Engineering – Methodik und Praxis 1997.
16. Ehrlenspiel K. Integrierte Produktentwicklung. 2nd Edition. München: Hanser 2006.
17. Lindemann U. Methodische Entwicklung technischer Produkte. Methoden flexibel und situationsgerecht anwenden, Berlin: Springer 2007.
18. Pahl G, Beitz W. Engineering Design: A Systematic Approach, Springer-Verlag, Berlin, Heidelberg, New York, Tokyo 2006 (2nd edition).